



*Top Honours*

*"Charm"*

BOOK 2  
PRICE 1'-



*Double Dates*

*"Charm"*

BOOK 2  
PRICE 1'-

"Double Dates"  
JEEP COAT  
TWIN SET



**MATERIALS:** 20 ounces "Fig-leaf" 4-ply Botany fingering wool (complete set); the jumper, 9 ounces; the jeep coat, 12 ounces; 1 pair each Nos. 9 and 11 knitting needles; 1 medium-sized crochet hook, and 3 small buttons.

**MEASUREMENTS:** Bust, 34-36 ins.; length of jumper, 19½ ins.; sleeve seam of jumper, 5¼ ins.; length of jeep coat, 22 ins.; sleeve seam, 19 ins.

**ABBREVIATIONS:** See page 3.

**TENSION:** 7 sts. and 9 rows to 1 ins. on No. 9 needles.

**ABBREVIATIONS used throughout this book**

K., knit; P., purl; inc., increase; dec., decrease; tog., together; sts., stitches; beg., beginning; patt., pattern; wl., wool; ins., inches; rem., remain; p.w., purlwise; vl. fwd., wool forward; w.r.n., wool around needle; r.s.f., right side facing; p.s.s.o., pass slipped stitch over; sl., slip; rep., repeat; cont., continue; st.-st., stocking stitch (right side K., wrong side P.); g.-st., garter stitch (every row K.); d.c., double crochet; moss st., moss stitch (K. 1, P. 1, every row on an uneven number of sts.).

Vacation



Moonbeams

"Charm"

**JUMPER (Back):** Using No. 11 needles, cast on 115 sts. and work in the following rib.—

**1st row**—K. 1, P. 1, \* K. 3, P. 1, K. 1, P. 1, rep. from \* to last 5 sts., K. 3, P. 1, K. 1.

**2nd row**—P. 1, K. 1, \* P. 3, K. 1, P. 1, K. 1, rep. from \* to the last 5 sts., P. 3, K. 1, P. 1.

Rep. these 2 rows for 6 ins., change to No. 9 needles, and, keeping the continuity of the rib, inc. 1 st. at each end of every 5th row until there are 129 sts. on needles. Proceed, without further shaping, until work measures 12½ ins.

**SHAPE ARMHOLES:** Cast off 6 sts. at the beg. of the next 2 rows, then dec. 1 st. at each end of the following 4 rows, then dec. 1 st. at each end of the next 4 alternate rows (101 sts.).

Now change to the following patt.:

**1st row**—K. 1, \* sl. 3 p.w., K. 3, rep. from \* to the last 4 sts., sl. 3 p.w., K. 1.

**2nd row**—P. 1, \* sl. 3 p.w., P. 3, rep. from \* to the last 4 sts., sl. 3 p.w., P. 1.

Rep. these 2 rows once again.

**5th row**—K. 1, wl. fwd., sl. 1, K. 2 tog., P.S.S.O., wl. fwd., K. 3, rep. from \* to the last 4 sts., wl. fwd., sl. 1, K. 2 tog., P.S.S.O., wl. fwd., K. 1.

**6th row**—Purl.

**7th row**—K. 1, \* K. 3, sl. 3 p.w., rep. from \* to the last 4 sts., K. 4.

**8th row**—P. 1, \* P. 3, sl. 3 p.w., rep. from \* to the last 4 sts., P. 4.

Page 4

Book Two

Rep. these last 2 rows once again.

**11th row**—K. 1, \* K. 3, wl. fwd., sl. 1, K. 2 tog., P.S.S.O., wl. fwd., rep. from \* to the last 4 sts., K. 4.

**12th row**—Purl.

Rep. these 12 rows until armhole measures 6½ ins. (measured on straight). Change to No. 11 needles and moss st. Work 2 rows, then shape shoulders by casting off 7 sts. at the beg. of the next 8 rows. Cast off in moss st. back.

**FRONT:** Work exactly as for back.

**SLEEVES (Both Alike):** Using No. 11 needles, cast on 81 sts. Work 9 rows in moss st.

**Next row**—\* P. 9, P. twice into the next st., rep. from \* to the last st., P. 1 (89 sts.).

Change to No. 9 needles and patt. as for yoke, and, taking care to maintain continuity of patt., inc. 1 st. at both ends of every 6th row until there are 101 sts. on needles. Now proceed, without further shaping, until work measures 5½ ins., then shape top as follows:—

Cast off 3 sts. at the beg. of the next 2 rows, then dec. 1 st. at both ends of every row until 75 sts. rem., then dec. 1 st. at both ends of every alternate row 12 times (51 sts.). Now dec. 1 st. at both ends of every 4th row, twice (47 sts.). Cast off 12 sts. at the beg. of the next 2 rows and cont. in patt. on the remaining 23 sts. for 14 rows. Cast off.

Book Two

## JEEP COAT

**Back:** Using No. 11 needles, cast on 127 sts., work 10 rows in moss st. Change to No. 9 needles and rib as for the lower part of jumper and cont. until work measures 14½ ins.

**SHAPE ARMHOLES:** Cast off 7 sts. at the beg. of the next 2 rows, then dec. 1 st. at both ends of the following 6 rows, then dec. 1 st. at both ends of the next 4 alternate rows (93 sts.). Now proceed, without further shaping, until armhole measures 7½ ins. (measured on straight). Cast off 7 sts. at the beg. of the next 8 rows. Cast off.

**Left Front:** Using No. 11 needles, cast on 89 sts., work 10 rows in moss st. Change to No. 9 needles.

**1st row**—\* K. 1, P. 1, K. 3, P. 1, rep. from \* 6 times, leave the rem. 27 sts. on a spare needle, turn.

**2nd row**—\* K. 1, P. 3, K. 1, P. 1, rep. from \* to end.

Rep. these 2 rows until work measures 14½ ins.

**SHAPE ARMHOLE (R.S.F.):** Cast off 8 sts., rib to the last 3 sts., K. 2 tog., P. 1.

Keeping the patt. correct, dec. 1 st. at the armhole edge on the next 6 rows, then dec. 1 st. at the armhole edge on the following 4 alternate rows, at the same time dec. 1 st. at the front edge inside the end purl st. on every 6th row until armhole measures 7½ ins. Cast off 7 sts. from the armhole edge on the next row, work 1 row, then cast off rem. sts.

Book Two

**To work the asparagus tip and moss st. border:** Using No. 9 needles, pick up the 27 sts. which were left at the beg. of work, rejoin wool, and with right side facing, work as follows:—

**1st row**—P. 1 and K. 1 into the first st., K. 3, \* K. twice into the next st., K. 3, rep. from \* twice, K. 1, and P. 1 into the next st., K. 1, and P. 1 into the next st., moss st. 7 (33 sts.).

**2nd row**—Moss st. 7, K. 1, bring wool to front of work, \* sl. 3 p.w., P. 3, rep. from \* to the last st., K. 1.

**3rd row**—P. 1, \* K. 3, sl. 3 p.w., rep. from \* 3 times, P. 1, turn.

**4th row**—As 2nd row, omitting the 7 sts. at the beg. of row.

**5th row**—P. 1, \* K. 3, wl. fwd., sl. 1, K. 2 tog., P.S.S.O., wl. fwd., rep. from \* to the last 8 sts., ending w.r.n. instead of wl. fwd., P. 1, moss st. 7.

**6th row**—Moss st. 7, K. 1, P. 1, to the last st., K. 1.

**7th row**—P. 1, \* sl. 3 p.w., K. 3, rep. from \* 3 times, P. 1, moss st. 7.

**8th row**—Moss st. 7, K. 1, \* P. 3, sl. 3 p.w., rep. from \* to the last st., K. 1.

**9th row**—P. 1, \* sl. 3 p.w., K. 3, rep. from \* 3 times, P. 1, turn.

**10th row**—K. 1, \* P. 3, sl. 3 p.w., rep. from \* 3 times, K. 1.

**11th row**—P. 1, \* wl. fwd., sl. 1, K. 2 tog., P.S.S.O., wl. fwd., K. 3, rep. from \* to the last 8 sts., P. 1, moss st. 7.

Page 5

**12th row**—Moss st. 7, K. 1, P. 1 to the last st., K. 1.

**13th row**—P. 1, \* K. 3, sl. 3 p.w., rep. from \* to the last 8 sts., P. 1, moss st. 7.

Rep. from the 2nd to the 13th rows inclusive until the border measures the same as for the side front to shoulder. Shape shoulder by casting off 13 sts. on the next 2 alternate rows from the side furthest away from the moss st. border. Cont. in moss st. on the last 7 sts. for 2½ ins. Cast off.

**Right Front:** Using No. 11 needles, cast on 69 sts., work 10 rows in moss st. Change to No. 9 needles.

Moss st. 7, P. and K. into next st., K. 2, \* K. 2 into next st., K. 3, rep. from \* 3 times, P. and K. into next st. Place these 33 sts. on to a spare needle for border and proceed as follows:—

**1st row**—\* P. 1, K. 3, P. 1, K. 1, rep. from \* to end.

**2nd row**—\* P. 1, K. 1, P. 3, K. 1, rep. from \* to end.

Now proceed as for Left Front, making shapings at the opposite ends of the work. The first 12 rows of pattern border will read as follows:—

**1st row (wrong side facing)**—K. 1, \* P. 3, slip 3 p.w., rep. from \* to last 8 sts., K. 1, turn.

**2nd row**—P. 1, slip 3 p.w., K. 3, rep. from \* to last st., P. 1.

**3rd row**—K. 1, \* P. 3, slip 3 p.w., rep. from \* to last 8 sts., K. 1, moss st. 7.

Page 6

required). Shape as follows:—Cast off 3 sts. at the beg. of next 2 rows, then dec. 1 st. at both ends of every row until 73 sts. rem. Then dec. 1 st. at both ends of every alternate row until 49

sts. rem. Now dec. 1 st. at both ends of every 4th row twice (45 sts.). Cast off 10 sts. at the beg. of the next 2 rows and cont. on the centre 25 sts. for 14 rows. Cast off.

### TO MAKE UP

**The Jumper:** Join up right shoulder. Join the left shoulder for ½ in. from the armhole edge. Sew small seams in the caps of sleeves. Sew in sleeves. Join sleeve and underarm seams. Work 1 row D.C. across left shoulder front, around neck and across left shoulder back. Work 3 small loops across left shoulder front, sew on buttons to correspond with loops. Press all seams.

**Jeep Coat:** Join borders to side fronts of coat. Join shoulder seams. Join moss st. border and sew across neck at back. Join small seams in the caps of sleeves, sew in sleeves. Join down sleeve and underarm seams. Press all seams.

Have you obtained copies of the

“*Charm*” BOOK 1 FROCK BOOK

and the

“*Charm*” BOOK 3 GLOVE BOOK

Many other numbers are in course of preparation and will be ready very shortly

WAIT FOR THE NEW “*Charm*” BOOKS

The leading fashion books featuring only the latest knitwear designs

Book Two

Page 7

# "Top Honours"

**MATERIALS:** 5 ounces navy 4-ply wool and 2 ounces of the same wool in light blue. (The original was made in "Kaitpoi" Super-Fingering 4-ply, shades No. 2219, navy, and 2216, light blue). A pair each of Nos. 12 and 10 needles.

**MEASUREMENTS:** Bust, 33-34 ins.; length from shoulder, 17½ ins.; sleeve seam, 4 ins.

**ABBREVIATIONS:** See page 3.

**THE FRONT:** With No. 12 needles and dark w.l. cast on 92 sts. and work in K. 1, P. 1 rib for 3 ins. Change to No. 10 needles and cont. in st-st., inc. 1 st. at both ends of the 7th and every following 6th row until there are 110 sts. on the needle. Cont. without shaping, until the work measures 11½ ins. from commencement, ending with a wrong side row.

**SHAPE ARMHOLES:** Cast off 6 sts. at the beg. of each of the



next 2 rows, then dec. 1 st. at the beginning of each of the next 10 rows (88 sts.). Break off dark w.l. and join on light.

**1st row**—\* Slip 1, K. 3, rep. from \* to end.

**2nd row**—\* P. 3, slip 1, rep. from \* to end.

**3rd row**—K.

**4th row**—P.

Change back to the dark wool and rep. these 4 rows.

These 8 rows comprise the yoke pattern. Cont. to rep. them until the work measures 16 ins. from the commencement, ending with a wrong side row.

**SHAPE NECK:** Patt. 31 sts., cast off 26 sts., patt. to end of row. Cont. in patt. on the last 31 sts.,

Book Two

dec. 1 st. at the neck edge every row until 21 sts. remain. Cont. in patt., without shaping, until the work measures 17½ ins. from commencement, ending at the armhole edge.

**SHAPE SHOULDER:** Cast off 7 sts., patt. to end of row.

**Next row:** Patt. to end of row.

Rep. these 2 rows once. Cast off.

Rejoin wool at needle point and work in patt. on the remaining sts. to correspond.

**THE NECK RIBBING:** With the right side of the work facing and using the No. 12 needles and dark w.l., pick up and K. 64 sts. evenly round the neck edge. Work in K. 1, P. 1 rib for 1 in. Cast off loosely in rib.

**THE BACK:** Work as given for the front until the work measures 17½ ins. from commencement.

**SHAPE NECK AND SHOULDERS:**

**Next row**—Patt. over 27 sts., cast off 34 sts., patt. to end of row.

## TO MAKE UP

Press the work lightly on the wrong side, using a hot iron over a damp cloth. Join side and shoulder seams. Sew sleeves into armholes, placing seam to seam and gathering fullness at top of sleeves. Press all seams.

Book Two

Work on the last set of 27 sts. thus:—

**1st row**—Cast off 7 sts., patt. to the last 2 sts., K. 2 tog.

**2nd row**—Cast off 2 sts., patt. to end of row.

Rep. these 2 rows once. Cast off.

Rejoin the wool at needle point and work a row to armhole edge.

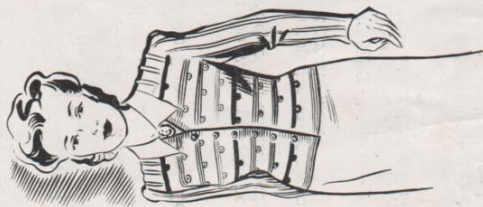
Shape shoulder to correspond with the opposite side.

**NECK RIBBING:** Work as given for the front neck ribbing, but pick up only 50 sts. instead of 64 sts.

**THE SLEEVES:** Using the No. 12 needles and dark w.l. cast on 88 sts. and work 1 in. in K. 1, P. 1 rib. Change to No. 10 needles and light w.l. and work in yoke patt. until the work measures 4 ins. from commencement.

**SHAPE TOP:** Cast off 3 sts. at beg. of next 2 rows, then dec. 1 st. at each end of every alternate row until 28 sts. remain. Work 1 in. without shaping. Cast off.

Page 9



# "Vacation"

Here is an opportunity of using up those odd pieces of wool. It is not necessary to adhere to the colours stipulated, any combination can be used providing you have half an ounce of each shade.

Work in st-st. (right side knit, wrong side purl) for 12 rows.  
**13th row**—Join on scarlet wool and K. 1 row.  
**14th row**—K. 10, \* cast on 12 sts., K. 20, rep. from \*, ending K. 10 instead of K. 20.  
**15th row**—K.

**MATERIALS**: 9 ounces of 4-ply wool in silver grey,  $\frac{1}{2}$  ounce 4-ply in each of the following colours:—Scarlet, Maize, Light Blue, Clover, Green, Dusty Pink, Mid-blue, Crinson. (The original was made in "Kaiapoi" Super-Fingering 4-ply wool.) One pair No. 10 needles (one pair of No. 12 needles for the front stripping only); 7 small buttons.

**MEASUREMENTS**: Shoulder to lower edge, 19 $\frac{1}{2}$  ins.; sleeve seam, 18 $\frac{1}{2}$  ins.; to fit 34-36 inch bust.

**TENSION**: 7 sts. to 1 inch pressed.

**ABBREVIATIONS**: See page 3.

**RIGHT FRONT**: With the grey wool cast on 60 sts. and K. 6 rows. Change to patt. thus:—

garter st. stripe. Inc. 1 st. at the side edge in the 21st row of the second pattern, and every following 10th row until there are 65 sts. on the needle. Work, without further shaping, until 5 rows past 6th coloured stripe have been worked (work will now measure 12 ins.).

**SHAPE ARMHOLE**: Cast off 10 sts. at armhole edge in the next row, then dec. 1 st. at this same edge every row until 49 sts. remain. Cont. in patt., still dec. at arm edge on the next 8 rows, but dec. 1 st. at the front edge in the next and every following 6th row until 35 sts. remain. Change to K. 5, P. 5 rib, but cont. dec. at front edge every 6th row until 30 sts. remain. When armhole measures 7 ins. shape shoulder by casting off 10 sts. at arm edge every alternate row 3 times.

**LEFT FRONT**: Work as given for the Right Front, with all shapings at the opposite end of the work.

**THE BACK**: With the grey wool cast on 100 sts. and work as given for the Right Front until 1 complete patt. has been worked. Cont. in patt., inc. 1 st. at both ends of the 21st row of the 2nd patt. and every following 10th row until there are 110 sts. on the needle. Cont., without shaping, until the back measures the same as the front to the armhole.

**SHAPE ARMHOLES**: Cast off 4 sts. at the beg. of the next 2 rows, then dec. 1 st. at both ends of every row until 90 sts. remain, then 1 st. at beg. of next 5 rows (85 sts.). Work straight until the stripes match those on the front, then change to K. 5, P. 5 rib and work until armhole measures 7 ins.

**SHAPE SHOULDERS**: Cast off 10 sts. at the beg. of every row 6 times. Cast off rem. 25 sts.

**FRONT STRIPPING**: With the grey wool and No. 12 needles cast on 8 sts. and work in garter st. (every row K.) for 4 rows. Make a buttonhole in the next row thus:—

K. 4, wind the wool around the needle twice, K. 2 tog., K. 1 to end. In the next row K. one made loop and drop the other. Cont. in garter st., making similar buttonholes, every 1 $\frac{1}{4}$  ins. (7 in all), then cont. until strip is long enough to go around the front edge. Cast off.

**THE SLEEVES**: With the grey wool cast on 50 sts. and work 2 ins. in K. 5, P. 5 rib. Cont. in this rib, but inc. 1 st. at both ends of the next and every following 6th row until there are 70 sts. on the needle, then inc. every 8th row until there are 94 sts. When sleeve measures 18 $\frac{1}{2}$  ins. shape the top by dec. 1 st. at the beg. of every row until 30 sts. rem. Cast off.

## TO MAKE UP

Twist each of the 12 cast on sts. to form a circle, turn down and stitch firmly on the wrong side of the work. Press the work on the wrong side, using a hot iron over a damp cloth. Join the shoulder, side and sleeve seams. Sew the sleeves into the armholes, placing the sleeve seam 1 inch to the front of the side seam, and gather the surplus sleeve fullness on either side of the shoulder seam. Neatly stitch the front stripping around the front edge, buttonholes to the right side. Sew on buttons to correspond with buttonholes. Press the seams.

# "Moonbeams"

## BEDJACKET WITH BRUSHED WOOL PANELS

**MATERIALS:** 10 ounces "Kaiapoi" Silverine wool; 1 pair No. 10 needles; 1 yard ribbon; wool teasel brush (optional).

**MEASUREMENTS:** Length from centre back to lower edge, 17 ins.; sleeve seam, 19 ins.; to fit 34-36 inch bust.

**TENSION:** 7½ sts. and 10 rows to 1 inch.

**ABBREVIATIONS:** See page 3.

**THE BACK:** Cast on 100 sts. and K. 10 rows.

Change to the pattern, which consists of 20 rows in st-st. and 10 rows in g-st. inc. 1 st. at both ends of the 5th and every following 6th row until there are 124 sts. on the needle. Cont., without shaping, until 3 complete patterns have been worked, finishing after the g-st. band.



**SHAPE ARMHOLES:** Cast off 5 sts. at the beg. of the next 2 rows, then dec. both ends of every row until 90 sts. remain. Work straight until the 20 rows of st-st. have been completed. Cont. in g-st. until the arm measures 7 ins.

**SHAPE SHOULDERS:** Cast off 10 sts. at the beginning of the next 6 rows. Cast off the remaining 30 sts.

**RIGHT FRONT:** Cast on 58 sts. and work 10 rows in g-st. Now cont. in pattern (20 rows st-st., 10 rows g-st.) as given for the back, but keep 8 sts. at the front edge in g-st. throughout as a border. Inc. 1 st. at the side edge in the 5th and every following 6th row until there are 70 sts. on the needle. Work, without shaping, until 3 complete patterns have been worked.



# "Wild Rose"

## FAIR ISLE JUMPER

Commence the Fair Isle design, which is worked throughout in st-st. The complete pattern is given in the accompanying chart. Each square represents one stitch and the design is worked in white. Thus the first 2 rows will read:-

**1st row**—Join on white. Knit 3 red, \* 1 white, 5 red, rep. from \*, ending 3 red instead of 5 red.

**2nd row**—Purl: 2 red, \* 3 white, 3 red, rep. from \*, ending 2 red instead of 3 red.

Cont. as given in the chart, and when the 8th row is completed break off the white and work 5 rows in red.

In the 15th row the "wild rose" is introduced. Cont. exactly as given in the chart. The short, rose are embroidered on the fabric on completion of the knitting.

On completion of the 33rd row break off the white wool and purl one row in red. Work 12 rows in K. 1, P. 1 rib. Cast off loosely straight across.

**THE BACK:** Work exactly as given for the front.

**THE SLEEVES:** Using the No. 10 needles, cast on 80 sts. and work 1 inch in K. 1, P. 1 rib. Change to No. 9 needles and work in st-st., inc. 1 st. at both

(Continued on page 14)

**MATERIALS:** 7 ounces "Kaiapoi" Super-Fingering 4-ply wool in scarlet, and 1 ounce of the same wool in white. A pair each of Nos. 10 and 9 needles.

**MEASUREMENTS:** Shoulder to lower edge, 18 ins.; width at underarm, 34 ins.; sleeve seam, 5 ins.

**ABBREVIATIONS:** See page 3.

**THE FRONT:** Using the red wool and No. 10 needles, cast on 100 sts. and work 3 ins. in K. 1, P. 1 rib.

Change to No. 9 needles and work in st-st. (right side K., wrong side P.), inc. at both ends of the 5th and every following 8th row until there are 120 sts. on the needle. Work, without shaping, until work measures 11 ins. from the commencement.

**SHAPE ARMHOLES:** Cast off 6 sts. at the beg. of the next 2 rows, then dec. 1 st. at beg. of every row until 91 sts. remain. P. 1 row.